




PROVIDING ENERGY. IMPROVING LIVES.



Phillips 66 Mutual Aid Presentation

08/14/24



Facility Info...

Built in 1941

Products

The Lake Charles Refinery primarily produces petroleum coke, gasoline, diesel, propane, and aviation fuel for distribution throughout the U.S.

We distribute products by truck, railcar, barge, and pipelines.

Located on a 690-acre site, we produce an average of 7.7 million barrels annually.

The Clifton Ridge Marine terminal (Carlyss) is the gateway for more than one hundred and sixty 550,000-barrel tankers a year, unloading a total 4.7 million barrels of crude a month. Refinery docks are located on Mike Hooks Road.





Accountability/Responsibility

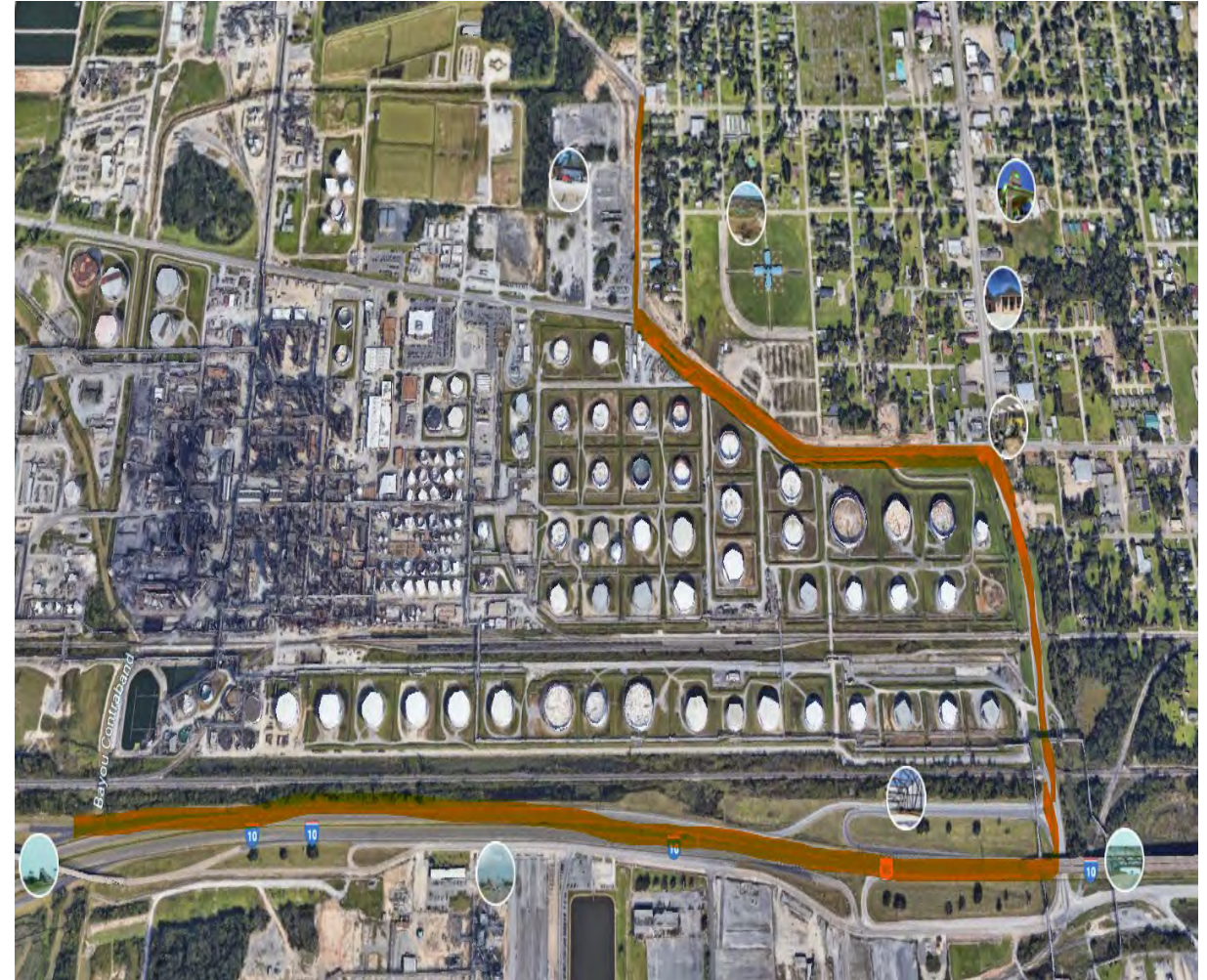
Mission Statement

We will do everything possible to prevent emergencies, but when they do occur, we will be prepared.

LCMC will provide response coverage 24 hours a day, 7 days a week. These emergency response teams will be sufficient in numbers to adequately handle first response efforts at an emergency incident.

Adequate personnel, equipment and supplies will be available for response to emergencies.

Investigations will be conducted to analyze incidents to determine causes and minimize the possibility of recurrence.





Emergency Response Plan

The LCMC **E**mergency **R**esponse **A**ction Plan (**ERAP**) establishes a management structure that:

- Provides for prompt emergency notification and response.
- Provides protection for our employees and those we host.
- Prevents / minimizes damage to LCMC Assets, the community and the environment.
- Safely restores the facility to a pre-incident condition.

Lake Charles Manufacturing Complex	Document Title: LCMC Emergency Response Plan	Rev. No: 21	Revision/Review Date: 07/19/20
Document Owner: Safety & Emergency Response Lead	Document No.: MMS15-L3.053	Retention Code: CG01	Review Cycle: Annual

Shortcuts

- Incident Command System ([org chart](#)) ([responsibilities](#))
- Response to:**
- Fire/Explosion ([flowchart](#))
- Release ([flowchart](#))
- Rescue ([flowchart](#))
- Injury ([flowchart](#))
- Bomb Threat Form ([flowchart](#))

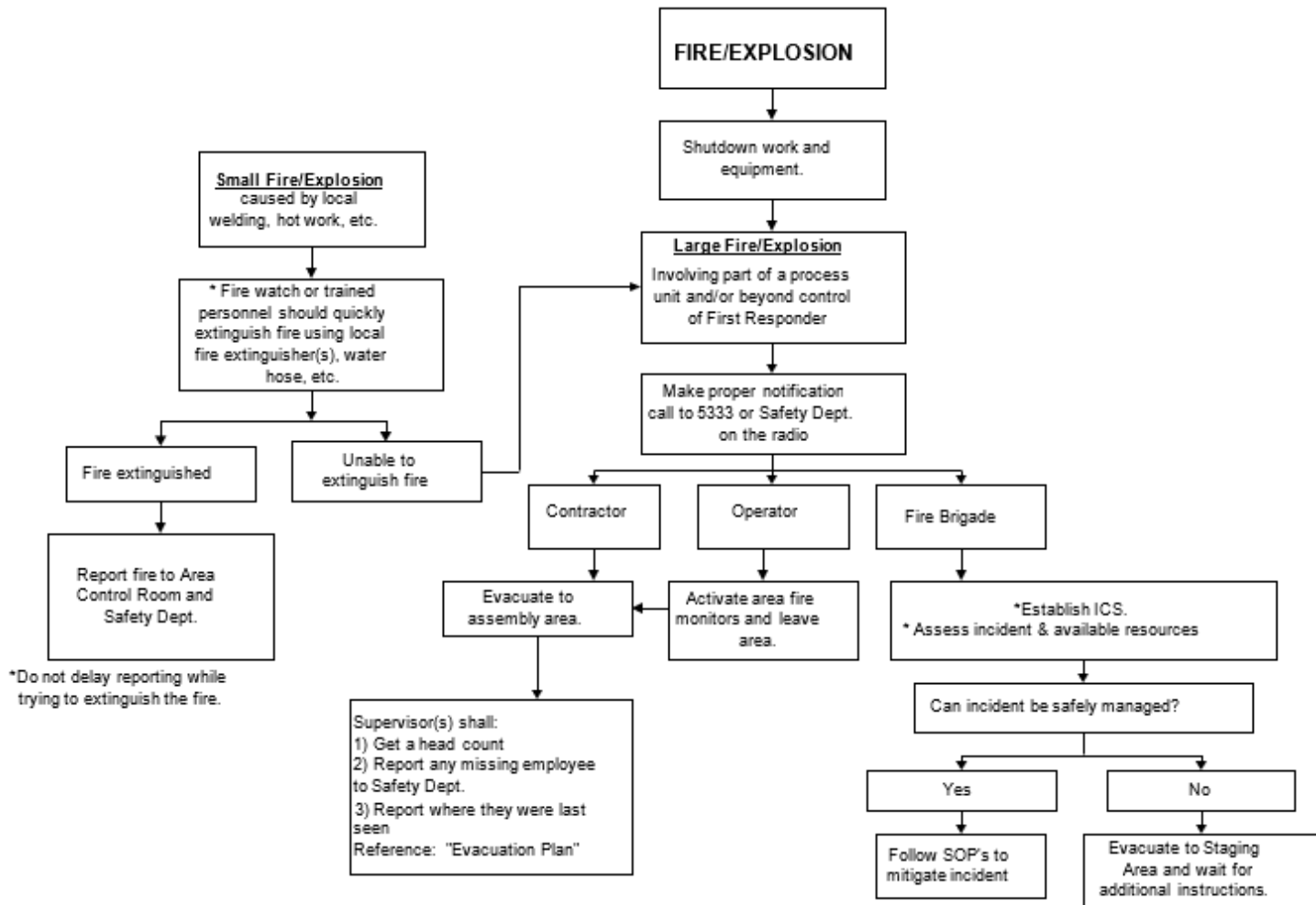
Table of Contents

Section	Page	List of Attachments	Page
Preface	2	A Initial Incident Flowchart	36
1.0 Purpose	4	B Emergency Notification Flowchart	37
2.0 Scope	4	C Environmental Call Sheet	38
3.0 Accountability/Responsibility	4	C1 Report of an On-Site or Off-Site DOT Pipeline Emergency	39
4.0 Definitions	4	D Emergency Contact Phone Numbers	40
5.0 Command Organization	8	E1 Incident Command System Organization	42
6.0 Procedure	11	E2 Command Position Job Descriptions	43
6.10 Response to Fire/Explosion	12	F Fire/Explosion Response Flowchart	57
6.11 Response to Release	15	G Release Response Flowchart	58
6.12 Evacuation/Shelter In Place	18	H Rescue Response Flowchart	59
6.13 Response to Rescue	19	I Injury Response Flowchart	60
6.13.1 Man Down Alarm	19	J1 Bomb Threat Call Form	61
6.14 Response to Injury	21	J2 Response to I-10 Pipeline Tunnel Emergency	63
6.15 Response to Natural Disasters Other Emergencies	23	J3 Response to Sasol Pipeline Emergency	65
6.16 Establish ICS	27	K Training Matrix	67
7.0 References	35	L Public Relations Plan	69
8.0 Attachments	35	M Compliance Map for 1910.120 (g)	77
		N Horn Codes	80
		O Compliance Map for DOT Pipelines 192.615, 192.617, 195.402(e) and 195.403	81

Emergency Response Plan

Attachment F - Fire/Explosion Response Flowchart

Attachment F
Fire/Explosion Response Flowchart



Emergency Response Plan

Job Description

Command Title	Location	Report To	Direct Reports	Job Description
				<ul style="list-style-type: none"> Perform assigned duties at <u>Road Block</u> (get approval from IC before allowing anyone past Road Block) Perform assigned duties for Air Traffic Control to secure air space (work with State Police) Perform assigned duties on Emergency Marine Vessel
Demobilization Officer	CP	Logistics Officer	None	<ul style="list-style-type: none"> Track equipment and contractors used during incident or on standby Develop a plan for demobilizing any resources committed to an incident Assist in the implementation of the plan
ERT (Fire Brigade)	Scene	OSC	None	Respond to fire/explosion (including DOT pipelines) as follows: <ul style="list-style-type: none"> Determine response plan If incident can be managed safely then put on PPE and follow SOPs to mitigate If incident cannot be managed safely then proceed to Level 1 Staging Area and wait for additional instructions If bomb threat <u>received</u> then Report to Firehouse Equipment Locker Area unless plant conditions demand that you stay at your normal job
ERT (HazMat Team)	Scene	OSC	None	Respond to release (including DOT pipelines) as follows: <ul style="list-style-type: none"> Determine response plan If incident can be managed safely then put on appropriate PPE and follow SOPs to mitigate If incident cannot be managed safely then proceed to Level 1 Staging Area and wait for additional instructions
ERT (Rescue Team)	Scene	OSC	None	Respond to rescue as follows: <ul style="list-style-type: none"> Determine response plan If incident can be managed safely then put on appropriate PPE and follow SOPs to mitigate If incident cannot be managed safely then proceed to Level 1 Staging Area and wait for additional instructions If bomb threat <u>received</u> then Report to Firehouse Equipment Locker Area unless plant conditions demand that you stay at your normal job
ATF (Air Monitoring)	Level 1 Staging Area	Safety Officer	None	Respond to release as follows: <ul style="list-style-type: none"> Determine response plan Receive instruction from the IH
ERT (EMT)	Scene	OSC	None	Respond to Injury as follows: <ul style="list-style-type: none"> Determine response plan Put on appropriate PPE and follow SOPs to stabilize victim and prepare for transport Respond to Release as follows:



Emergency Response Plan

Position Training Matrix

**Attachment K
Training Matrix**

ICS Position	Specific Training Requirements
All Command Staff	<ul style="list-style-type: none"> Emergency Plan Basic Incident Command System Training
Incident Commander (Refinery Manager)	<ul style="list-style-type: none"> Emergency Plan Basic Incident Command System Training
Environmental (Refinery Environmental Lead)	<ul style="list-style-type: none"> Emergency Plan Basic Incident Command System Training
Emergency Operations Chief - OSC (Safety Director)	<ul style="list-style-type: none"> Emergency Plan Basic Incident Command System Training
Information Officer (Public Relations Director)	<ul style="list-style-type: none"> Emergency Plan Basic Incident Command System Training
Liaison Officer	<ul style="list-style-type: none"> Emergency Plan Basic Incident Command System Training
Safety Officer (S&OH Coordinator)	<ul style="list-style-type: none"> Emergency Plan Basic Incident Command System Training
Finance Section Chief	<ul style="list-style-type: none"> Emergency Plan Basic Incident Command System Training
Emergency Operations (Safety & Emergency Response Lead)	<ul style="list-style-type: none"> Emergency Plan Basic Incident Command System Training
Business Interruption Section Chief (Operations Manager)	<ul style="list-style-type: none"> Emergency Plan Basic Incident Command System Training
Area Managers/Excel Ops Support	<ul style="list-style-type: none"> Emergency Plan Basic Incident Command System Training
Process Unit Coordinator(s)	<ul style="list-style-type: none"> Emergency Plan Basic Incident Command System Training
Logistics Section Chief (Tech Services Manager) <ul style="list-style-type: none"> Communications Security Food/Supplies 	<ul style="list-style-type: none"> Emergency Plan Basic Incident Command System Training
Planning Section Chief (Reliability Manager) <ul style="list-style-type: none"> Equipment People Resources Planning Documentation Situation Unit 	<ul style="list-style-type: none"> Emergency Plan Basic Incident Command System Training
On Scene Commander (ERS)	<ul style="list-style-type: none"> Annual off-site Fire School HazMat Technician initial and annual Fire Brigade Training First Responder and Refresher Rescue Training Offsite School & Team training as schedule allows)
Level 1 Staging Officer (ERT member)	<ul style="list-style-type: none"> Emergency Plan Basic Incident Command System Training
Staging Manager	<ul style="list-style-type: none"> Emergency Plan Basic Incident Command System Training

**Attachment K
Training Matrix (continued)**

Mutual Aid	As appropriate to incident (technician level, FF1, etc.)
Fire Brigade	<ul style="list-style-type: none"> Annual off-site Fire School Fire Brigade Training
HAZMAT	<ul style="list-style-type: none"> HazMat Awareness, Operations, Technician, & Specialists initial and annual as necessary. Based on Haz Mat member training level. Minimum of 8 hours refresher training per year.
Rescue Team	<ul style="list-style-type: none"> Annual off-site Rescue School Rescue Team training
ATF	<ul style="list-style-type: none"> Onsite training conducted by IH
EMT	<ul style="list-style-type: none"> First Responder Emergency Medical Technical - Basic
Communications Unit Leader	<ul style="list-style-type: none"> Emergency Plan Basic Incident Command System Training
Situation Status Unit Leader	<ul style="list-style-type: none"> Emergency Plan Basic Incident Command System Training
Documentation Unit Leader	<ul style="list-style-type: none"> Emergency Plan Basic Incident Command System Training
Security Unit Leader	<ul style="list-style-type: none"> Emergency Plan Basic Incident Command System Training
Main Gate	<ul style="list-style-type: none"> Emergency Plan Basic Incident Command System Training

Fire Brigade

Paid Personnel

- 5 – Emergency Response Specialist (Shift work)
(Emergency Response Specialist serve as the Operations Chiefs during incidents.)
- 4 - Safety Coordinators/Firefighters (Straight Days)
(4 EMT's and 5 EMR's)

Volunteer Personnel

- 58 Fire Brigade (Pro-Board NFPA 1081 Industrial Firefighter Certified)
(Pro-Board HAZMAT Awareness and Ops.)



Certified Industrial Emergency Response Specialist

4- Personnel 24/7

Must Complete any 3 modules within 7 years



Module 1 – Industrial Firefighting (Certification)

- NFPA 1081 Industrial Exterior Fire Brigade Training
- NFPA 1081 Interior Fire Brigade Training
- NFPA 1081 Industrial Fire Brigade Leadership

Module 2 – Hazardous Materials Response (Certification)

- NFPA 472 Hazardous Material Technician Training
- NFPA 472 Hazardous Materials Incident Command Training

Module 3 – Rescue Techniques (Certification)

- NFPA 1006 Rope Rescue Level I (Required)
- NFPA 1006 Confined Space Rescue Level I and I
- NFPA 1006 Trench Rescue Level I and II

Module 4 – Hands-on Industrial Emergency Response Training
40 hours

HAZMAT Team

HAZ-MAT Team - Response team for incidents which involve a hazardous materials response for both on and off-site areas of responsibility. (We are responsible for the product till it reaches its destination)

Team consists of Fire Brigade members who have specialized training and is supported by the rest of the brigade.

19- HAZMAT Team members are Pro-Board 1072 Certified HAZMAT Techs. by Texas A&M



HAZMAT Team

(8)- Members are Pro-Board-Certified
HAZMAT Transportation Specialist

All are Oil Spill Response Certified



Rescue Team



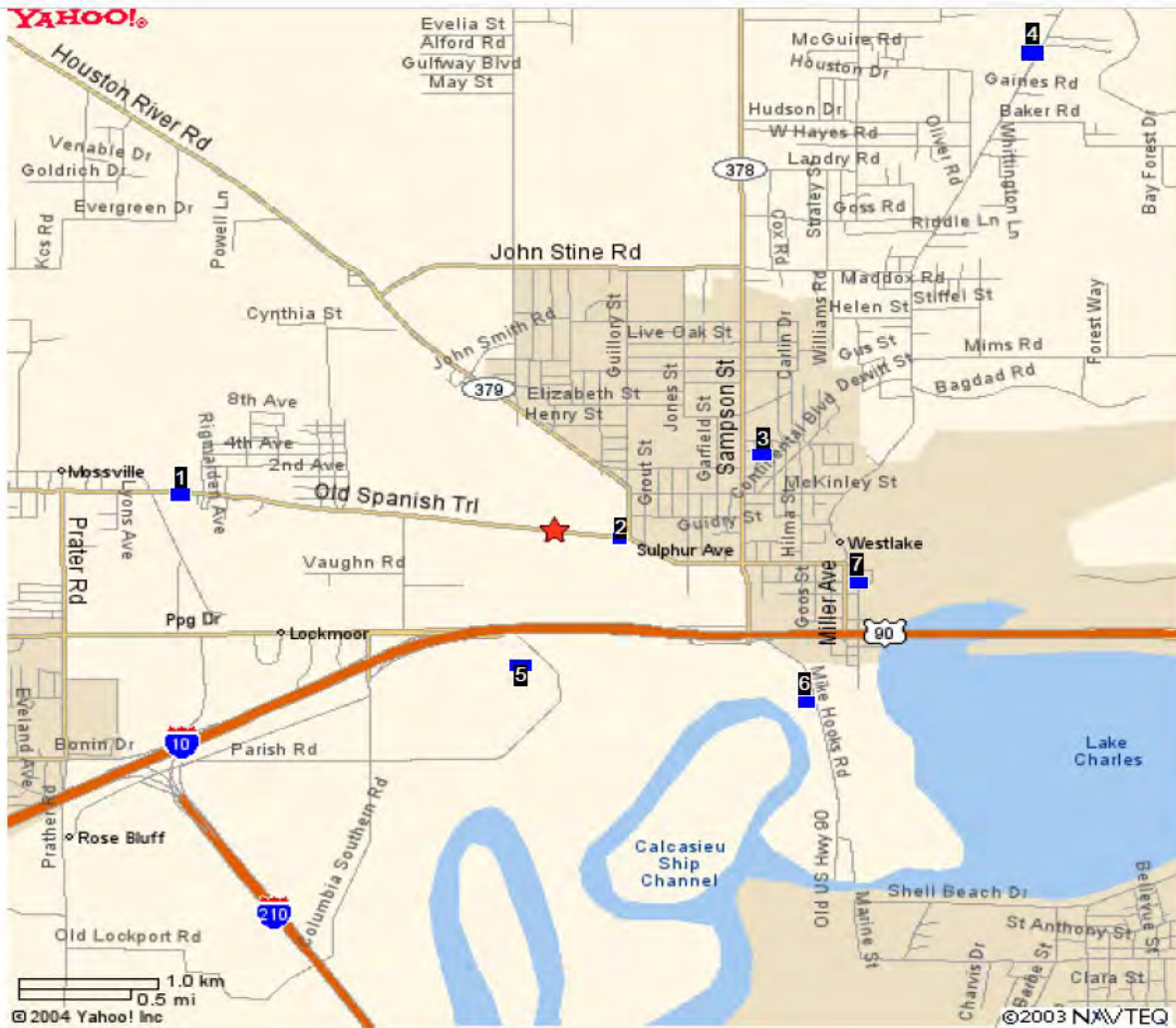
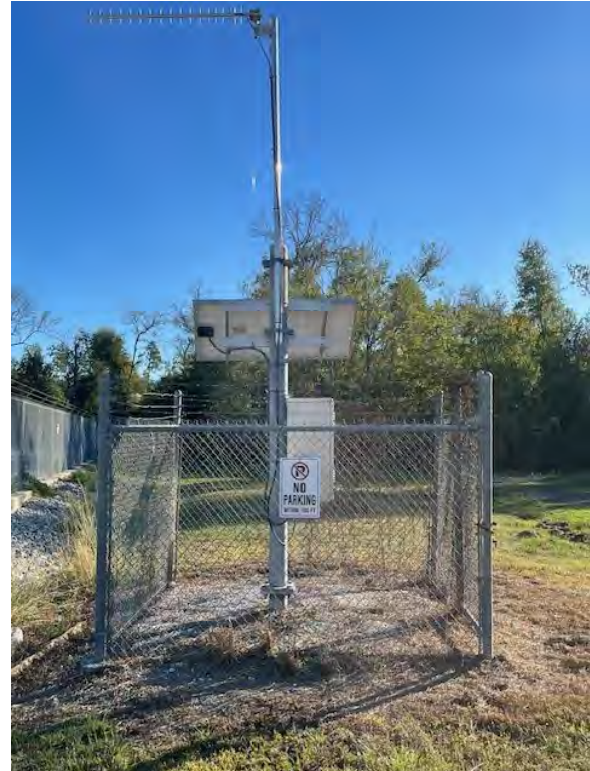
Rescue Team - Response team for incidents which involve an elevated or confined space rescue of personnel.

Team consists of 16 members who have specialized training in Elevated rescue, Confined Space rescue, and Emergency Medical Responder.



Air Monitoring Team

Air Monitoring Team 16- Members



- 1. School board OST**
H2S NO DATA
SO2 NO DATA
- 2. Contr. parking lot**
H2S NO DATA
SO2 NO DATA
- 3. Mulberry street**
H2S NO DATA
SO2 NO DATA
- 4. Water tower Hwy 378**
H2S NO DATA
SO2 NO DATA
- 5. Lyondell gate 7**
H2S NO DATA
SO2 NO DATA
- 6. North dock gate**
H2S NO DATA
SO2 NO DATA
- 7. SP Arnett School**
H2S NO DATA
SO2 NO DATA

7- Off Site Monitors

Air Operations Team (Drone)

4-FAA
Certified
Drone Pilots



Incident Command Team

ICS Drill

58 Member Team

Worst Case ICS Drill at Cal-Cam Event Center 120 Participants- 31 Different Agencies



Emergency Response Training

3 Fire Annual Schools

2 Annual Rescue School

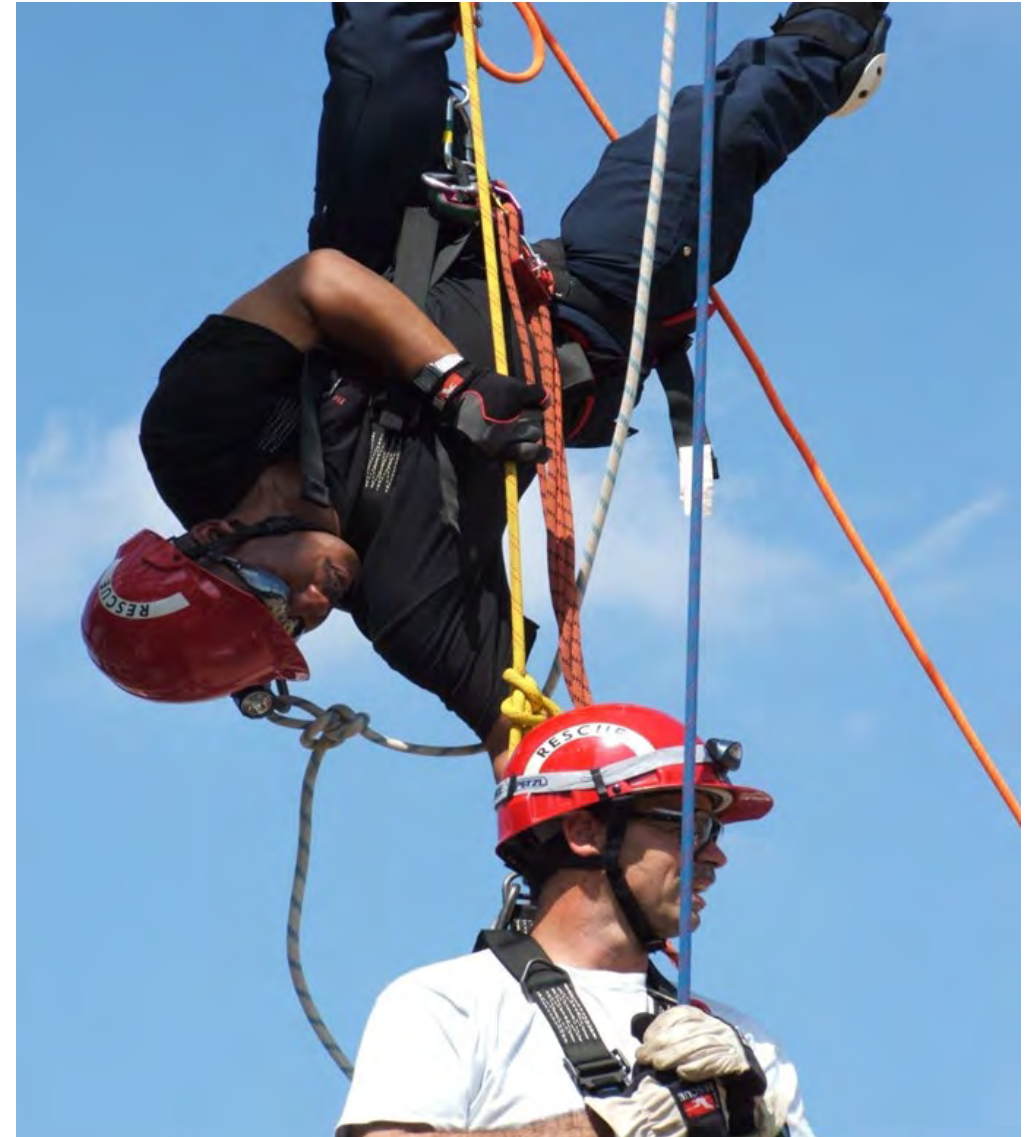
HAZ-MAT School

Oil Spill School

IMAT Training

ICS Quarterly Drills

Monthly ERT Training



Mutual Aid Training

Westlake Fire Extrication and Airbag Training



Mutual Aid Training

Clifton Ridge/LC Pipeline Yearly Drill



Mutual Aid Training

Sasol Training



Emergency Equipment

Engine 2

- Type 3 Wildland Engine
- 750 GPM pump.
- 4k generator
- Telescoping Scene Lighting
- 500-gallon water tank
- 4-wheel drive



Emergency Equipment

Engine 3

- 3000 GPM pump
- 1000 gallons of foam (1x3) Universal Gold AR-AFFF
- 1x3 gpm monitor



Emergency Equipment

Engine 4

- INUNDATOR SUPER PUMPER
- 5300 GPM PUMP 8000 GPM monitor
- 1000-gallon foam tank (1x3 Universal Gold Foam)
- Carries both 7" and 5" Fire Hose
- (Able to flow 9,000 GPM off our system)



4- 8 inch pump inlets

Emergency Equipment

Rapid Attack Trucks



3 pickups set up with 1500 GPM monitors 2 trucks have 60-gallon foam tanks

Emergency Equipment

Rescue 1

Fully Equipped Rescue Truck

Confined Space

Extrication Tools

Air Packs

Air Bags

Telescoping Scene Lighting



Emergency Equipment

Medic 1

Fully Stocked Ambulance
Set up as a Basic Care Unit



Emergency Equipment

Incident Command Vehicle
Staffed 24/7
Shift Team Leads



ERS Truck- Operations Chief
Staffed 24/7
Carries -First Response Medical Equipment



Emergency Equipment

Hose Trailer



1300 feet of 7 ¼ " hose
600 feet of 6" hose
3100 feet of 5" hose

Emergency Equipment

3 Portable Monitors -(2) 1x6 (1) 1x3



(1) 6000 lb Dry-Chem Trailer



Emergency Equipment

Foam Trailers

Two 6000-gallon foam trailers

1x3 Solberg Versaguard SFFF-AR

Total Foam Supply at Phillips 66 Lake Charles
26,025 gallons



Emergency Equipment

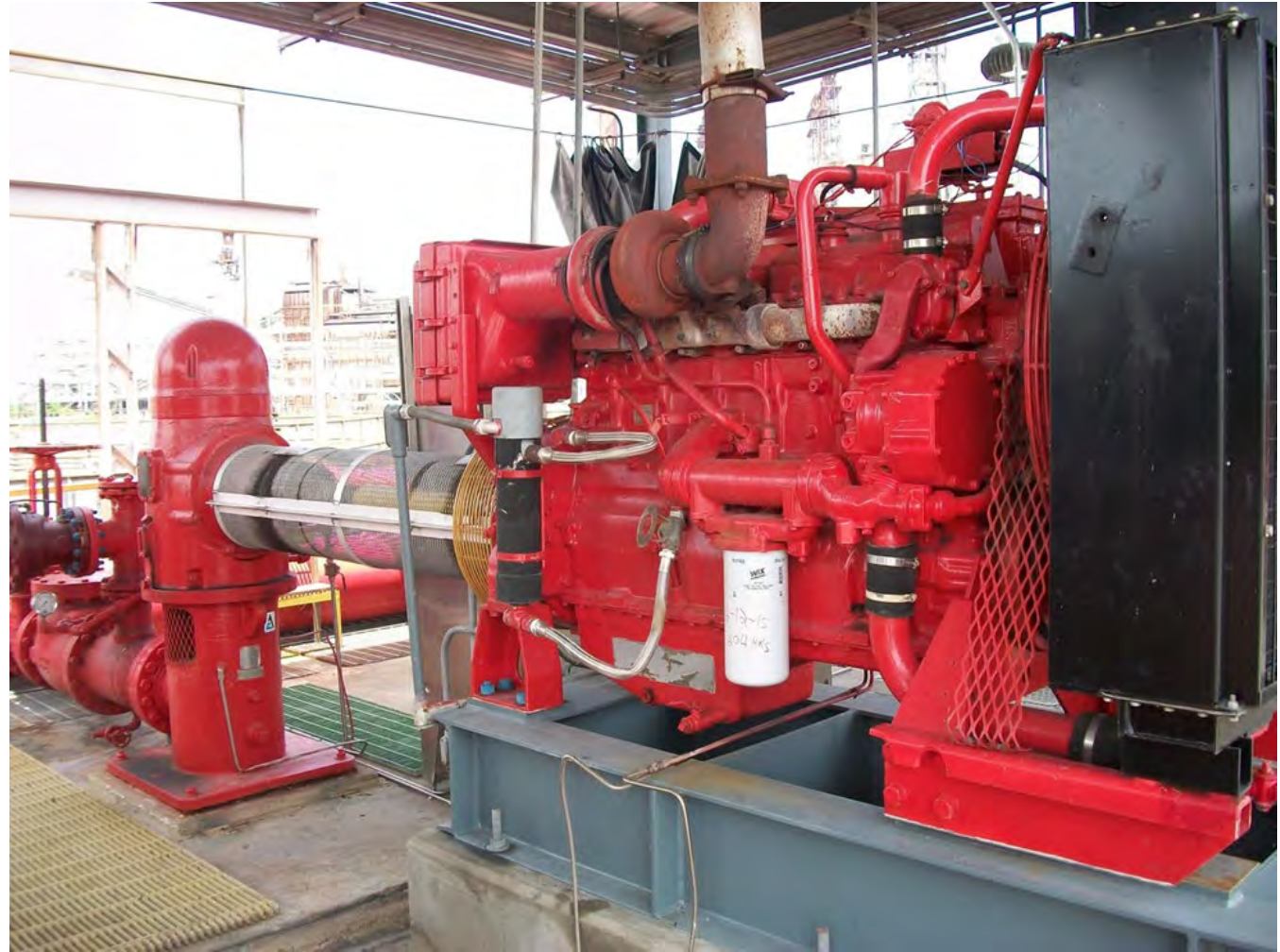
Portable Pumps

(2) Diesel Engine powered Portable pumps including the 5000gpm below...



Fire Pumps

9 Million Gallon Pond - NLF
3 Million Gallon Pond – Lagoon
1 Million Gallon Tank – ETF
(3 pumps at Docks)



7 Diesel pumps and 3 Electric Pumps Capacity of 28,000 GPM.

Hydrants

Manifolds capable of flowing
5000 gallons plus per minute



Hydrant and Block Valves
686 (tested once a year)



We build our own fire hydrants
170lbs of pressure on system

Emergency Equipment

47 Tanks with foam chambers

SCBA – 342

Fire Hose

1.75" – 15,850 feet (317 Sections)

3" - 7,900 feet (158 Sections)

5" - 14,300 feet (286 Sections)

6" - 600 feet

7.25" 1300 feet

Total: 38,450 (769 sections)

Deluge/Sprinkler Systems

104 Systems

Fire Extinguishers 1,349



Mutual Aid Calls

Calcasieu Refinery Fire



Mutual Aid Calls

Tiger Island Fire



Mutual Aid Calls

RE Heidt 18-Wheeler Fire



Community Involvement



Westlake Christmas Parade



Lake Charles Stem Day at the Park



Community Involvement

Donations



Community Involvement

Back to School

United Way Fire Truck Ride



Community Involvement

Halloween 2023



Questions

